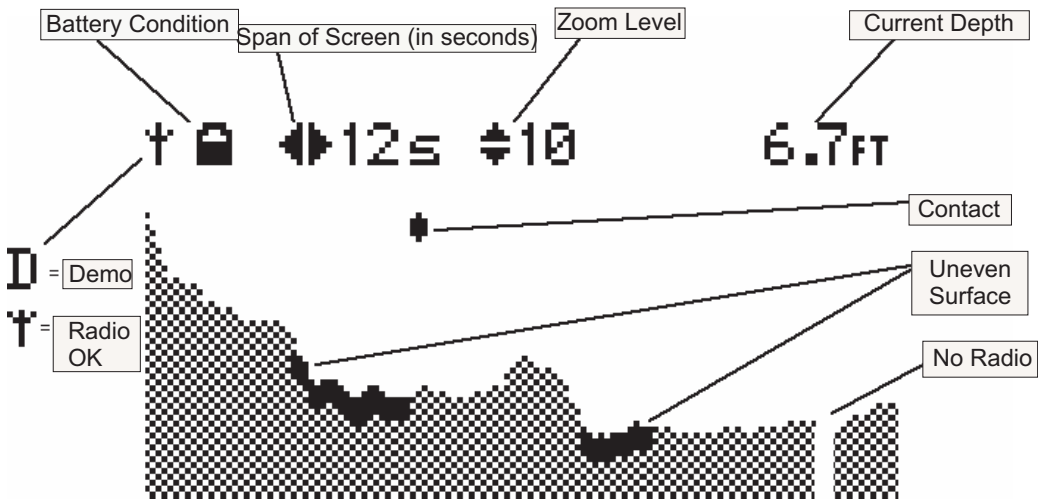


# Echo Sounders

## Graphical Echo Sounder



Sample Screen

A highly advanced graphic sonar, fully compatible and ready to install in either the "Microcat", "Baitboat" and "Technicat". It incorporates advanced digital signal processing to help differentiate between weed and sand or gravel. The receiver draws and displays the contour of the bottom whilst displaying the depth as the boat moves along. It will register and display a non-bottom contact - eg. Fish. The operational range is **200 + metres** to a depth of **12 metres** and run for **\*25 hours** on one full charge, also incorporating a back-light facility for night work. You can change the working parameters - **feet/metres - 4 zoom levels - 4 speed levels**. Can be hand held or bank stick mounted. Comes supplied in a waterproof case.

### Specifications:



Weight:	500g
Dimensions:	20cm x 11cm x 8cm
LCD Dimensions:	128 x 64 pixels
Radio Frequency:	458 Mhz EN300 220-2V2.1.1 EN301 489-03V1.4.1
*Running Time:	10hrs with Backlight
Recharge Time:	15hrs
Battery Condition Indicator:	6 levels